

Double Color Exposures



You will be creating a Double Color Exposure using Photoshop and Portraits to create a color fringing look.

SHOOTING ASSIGNMENT

You will be taking portraits of your partner in two different angles. You will need to fill the frame and make sure you include from the waist up. It is your decision on the orientation of the images. Although, you will need to make sure that the two images you choose to use are orientated the same way. For example, both should be either horizontal or vertical.

* You need 6 different poses.

3- side view

3-front view

This will allow you to try various color combinations.

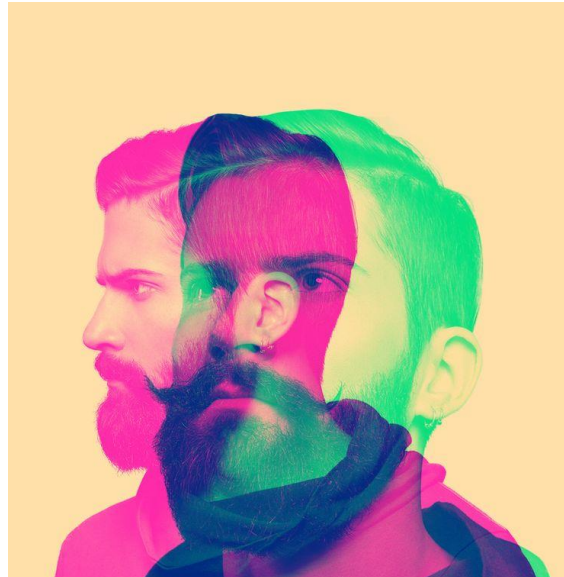
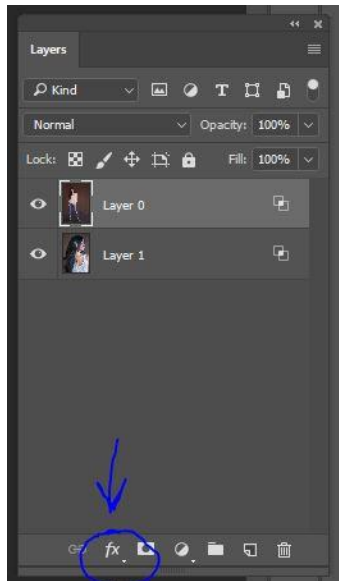
You must shoot your images on a blank, clean background. The studio works best, but if you can find a nice solid background outside that will work just fine.

GO ABOVE AND BEYOND:

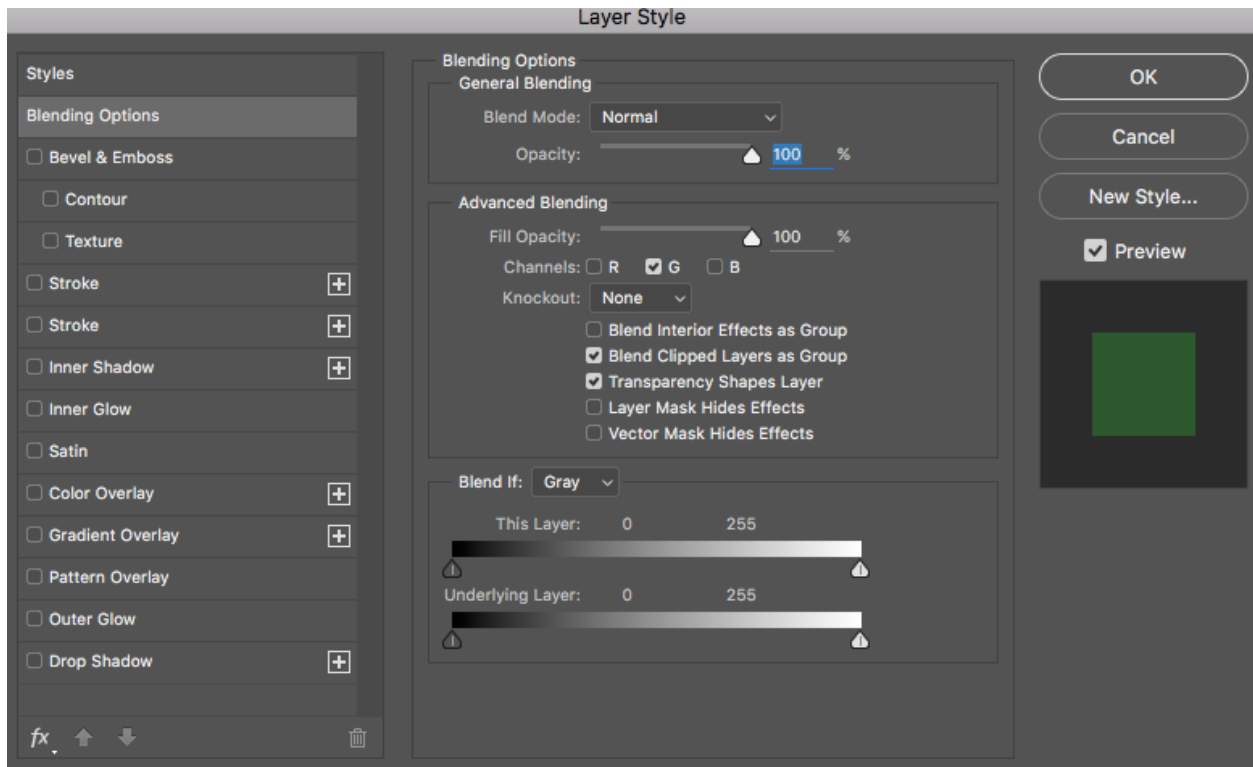
* Have your model make large gestures, i.e flip their hair, arm movements, dramatic poses.

POST-PROCESSING IMAGES IN PHOTOSHOP

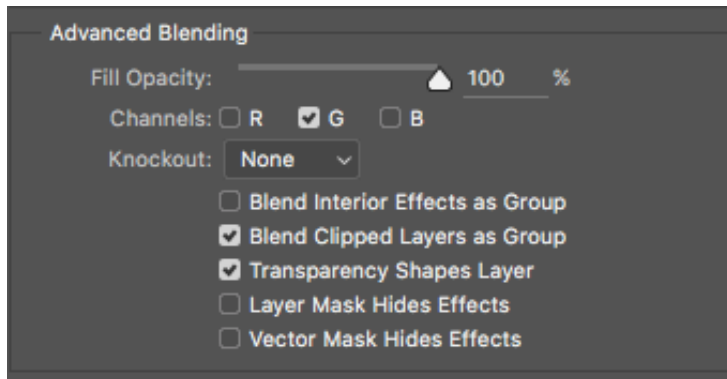
Bring both images into Photoshop and place them onto two separate layers. Then on the top layer click the **fx** tool [layer styles] button at the bottom of the Layers Bin.



fx-->Blending Options- Then a box will pop open like this:



Uncheck the R G B boxes in the ADVANCED BLENDING SECTION. As you click the boxes one-by-one you will see your image change colors!



Once you get the color combination you like hit OK.

Then if there is left over space after adjusting where you want the images to be, SELECT a slice of the image with the correct color [make sure it is just the background and does not contain any of the subject inside] using the MARQUEE TOOL.

Then RIGHT CLICK and select FREE TRANSFORM. Pull from the side to stretch it out. Hit ENTER then CTRL+D to deselect.

Add ADJUSTMENT LAYERS [SELECTIVE COLOR, LEVELS, COLOR BALANCE, BRIGHTNESS/CONTRAST, SATURATION...etc.] to refine the color combinations you chose. (Make sure you add adjustment layers from the adjustment layer box.)

SAVE AS...JPEG. Upload up to 2 of your best double color exposure combinations.

Here is a YouTube [TUTORIAL LINK](#) for the steps above.

