



AUTHENTIC AND AWESOME PORTRAITS



CHRISORWIG.COM/LEARN

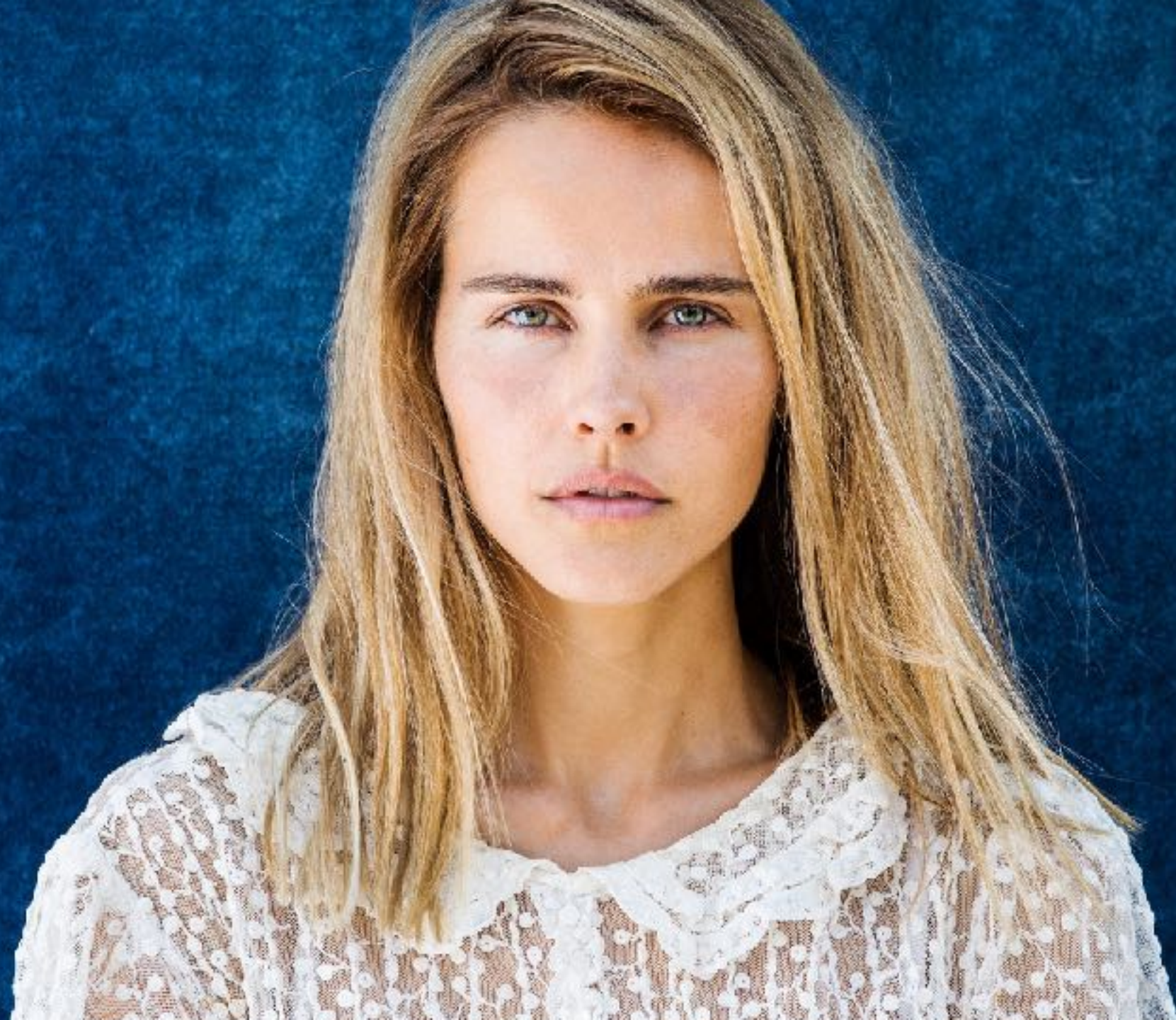
CHRISORWIG.COM / LEARN

INSTAGRAM: @CHRISORWIG













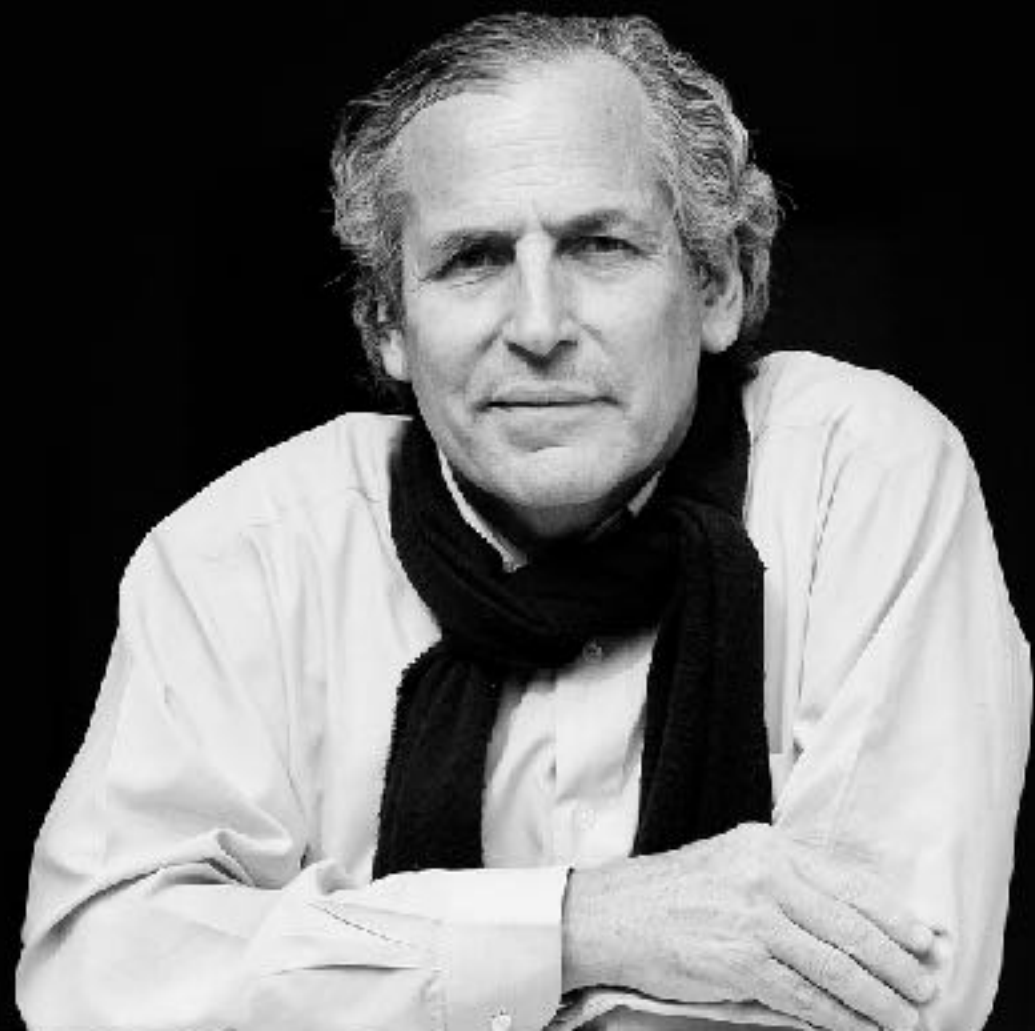


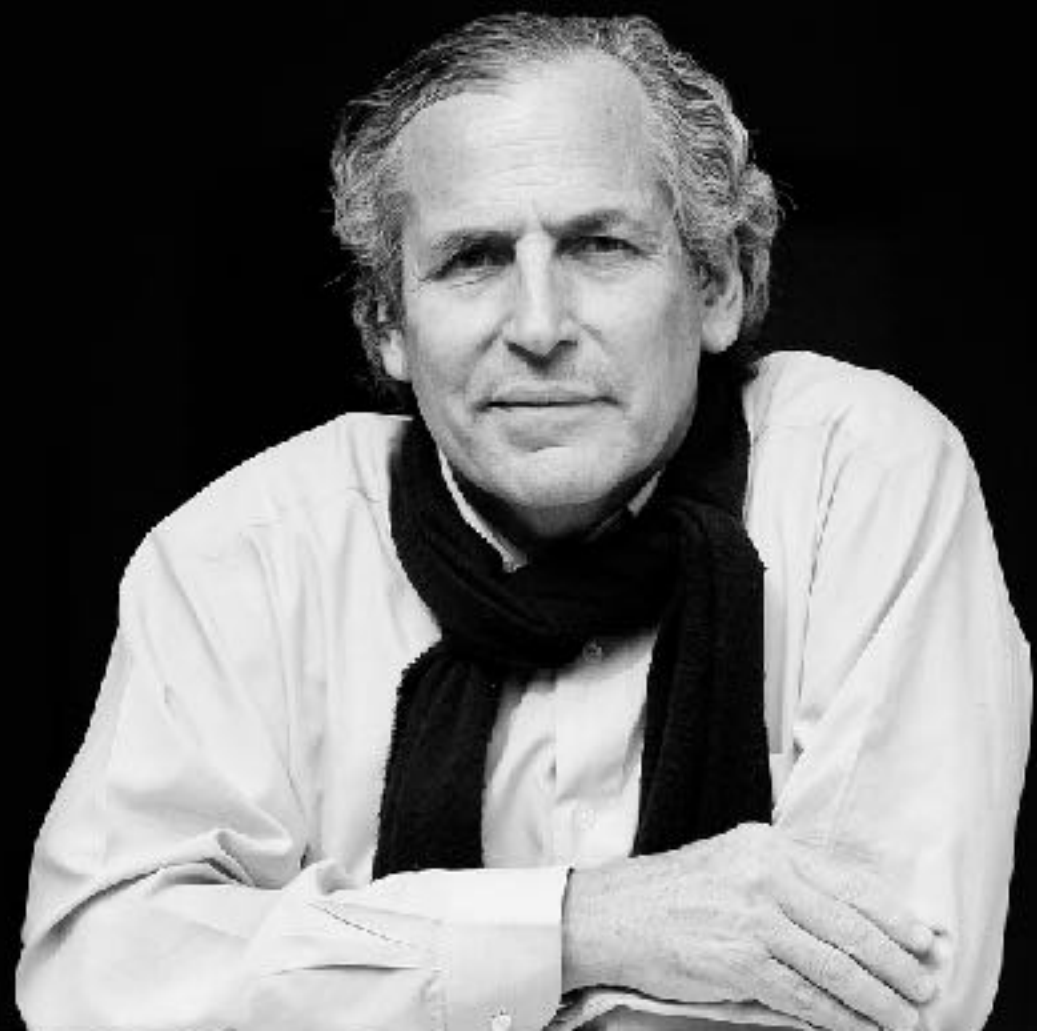




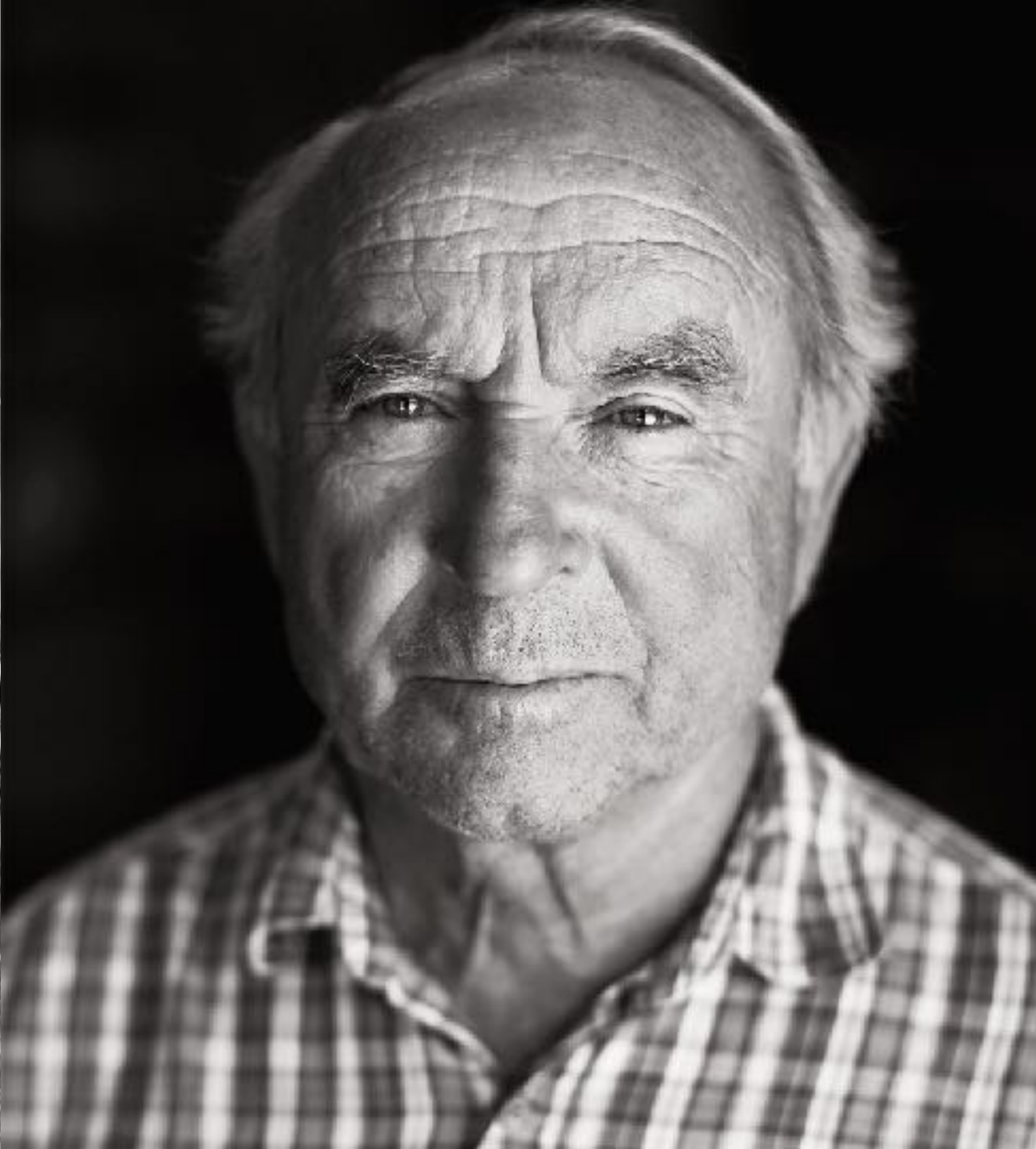


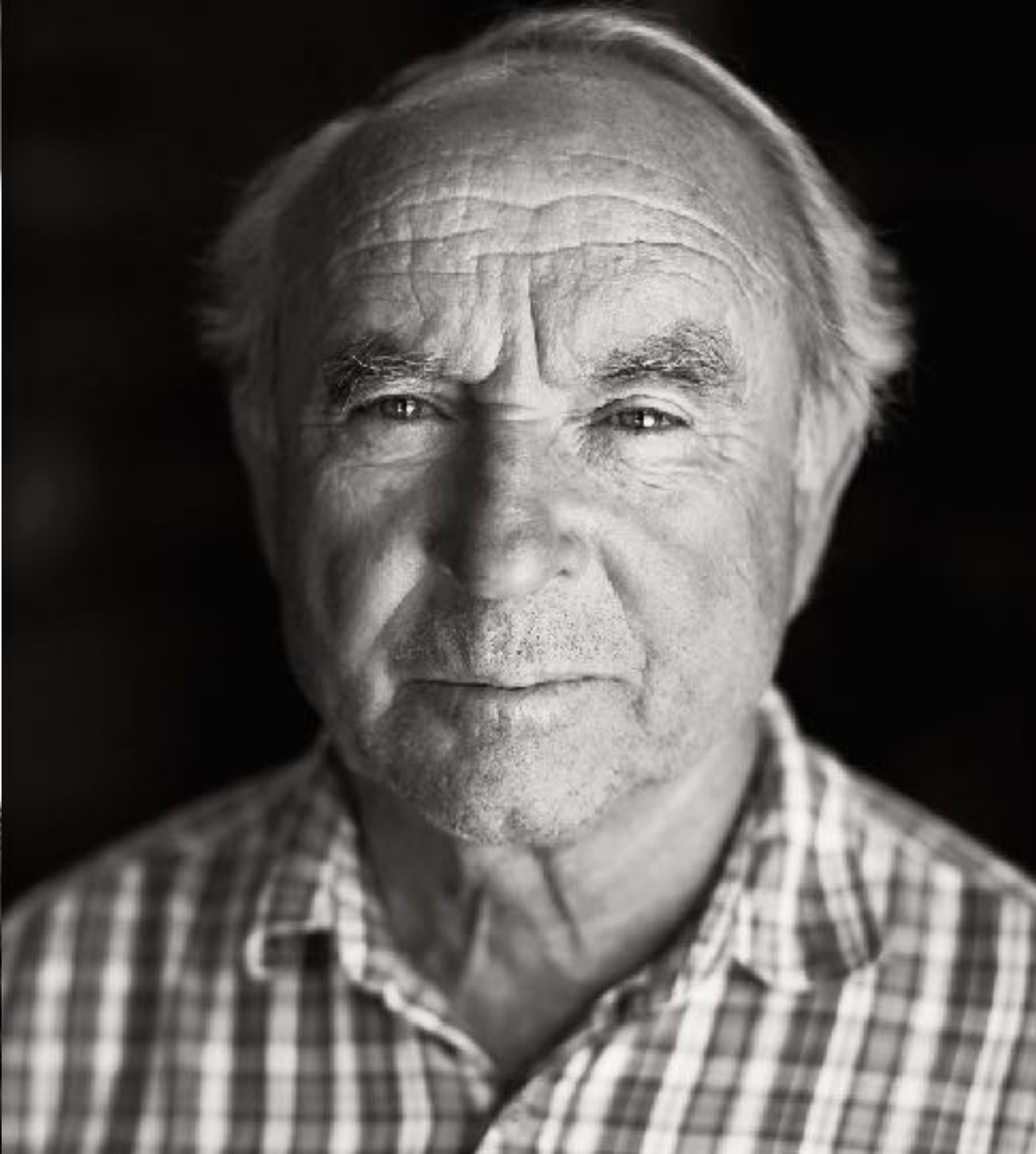






















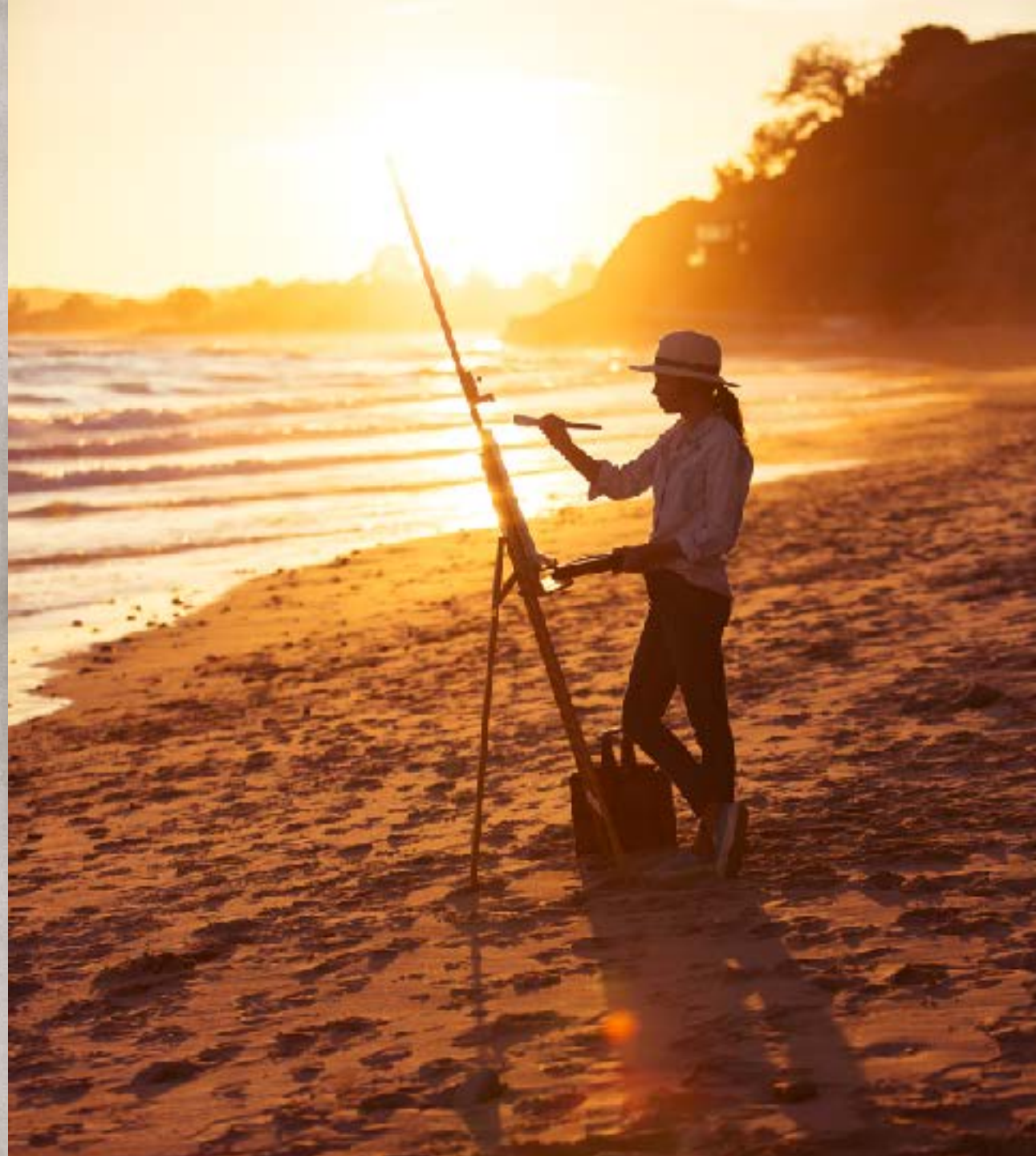


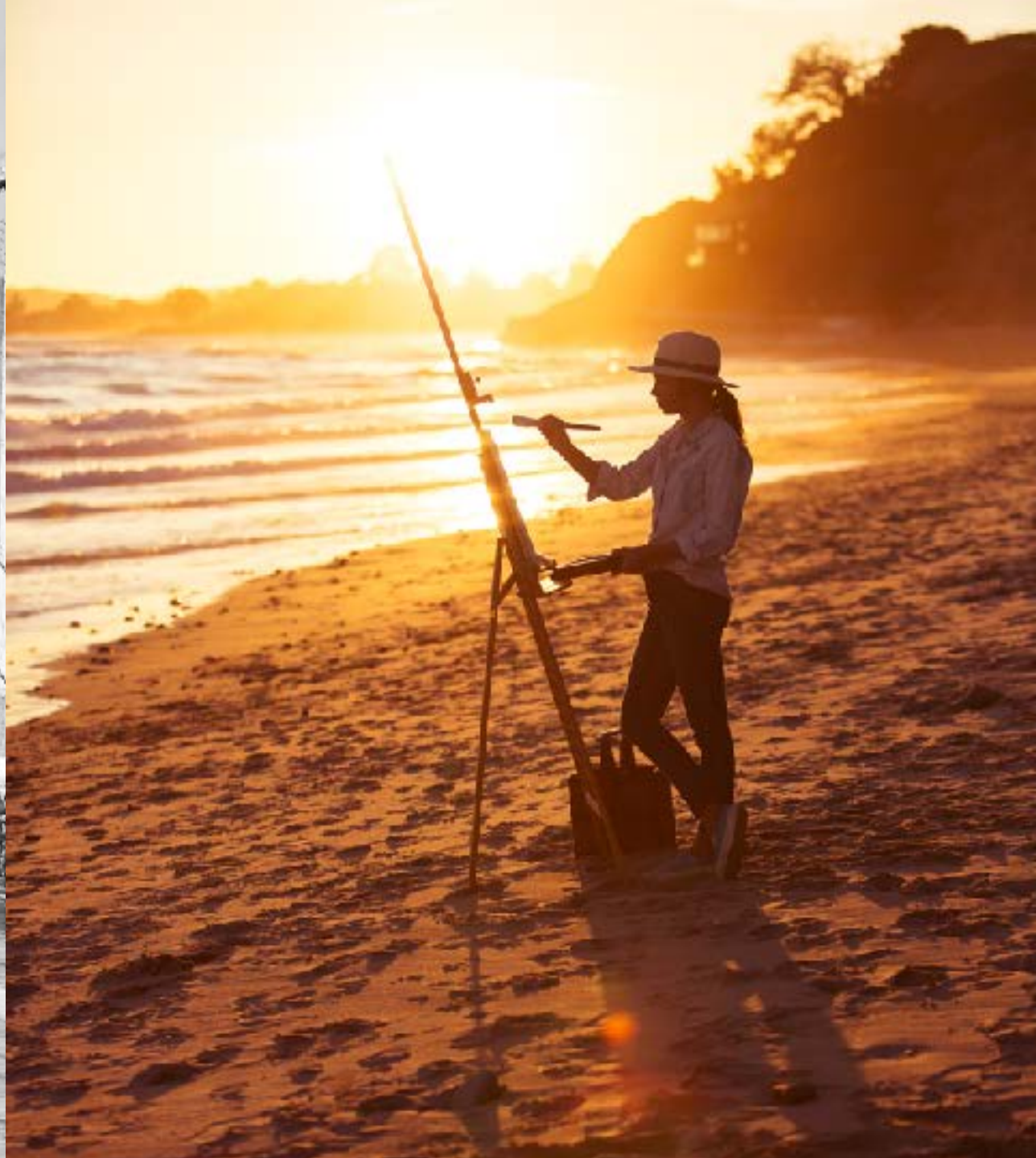














THE PARADOX OF PORTRAITURE



**A PORTRAIT!
WHAT COULD BE
MORE SIMPLE AND
MORE COMPLEX,
MORE OBVIOUS AND
MORE PROFOUND.**

CHARLES BAUDELAIRE, 1859

HOW look or Who?
SUBJECT: celebrity, scientist, ceo, homeless



PERFECTLY IMPERFECT

AUTHENTIC + AWESOME

HOW?



7 STRATEGIES



7 STRATEGIES



1. RETHINKING PORTRAITURE
2. RECENTERING THE SUBJECT
3. NATURAL LIGHT
4. SIMPLIFY THE FRAME



1. CROP AND COMPOSE
2. COLOR / TONE
3. RETOUCHING

7 STRATEGIES



1. RETHINKING PORTRAITURE
2. RECENTERING THE SUBJECT
3. NATURAL LIGHT
4. SIMPLIFY THE FRAME



1. CROP AND COMPOSE
2. COLOR / TONE
3. RETOUCHING

**MAKE VISIBLE
WHAT WITHOUT YOU,
MIGHT PERHAPS
NEVER HAVE BEEN SEEN.**

HENRI CARTIER-BRESSON



NEVER PHOTOGRAPH

MODEL
MUSICAN
ATHLETE
ARTIST
SURFER
CEO

ALWAYS PHOTOGRAPH

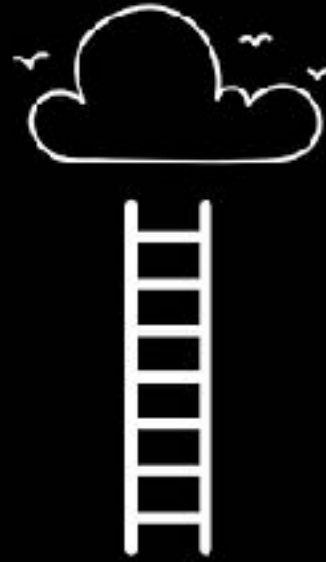
**COMPLEX HUMAN
WITH INTERESTS,
DREAMS, PAST, PAIN
JOY, SOUL, HEART
AND MIND**



JOURNALIST



ARTISAN



PROMOTER



PLAY WRITE



YOUR ROLE

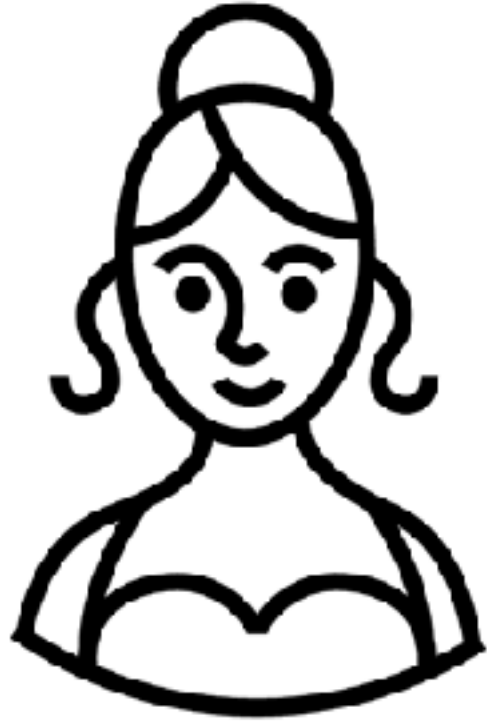
7 STRATEGIES

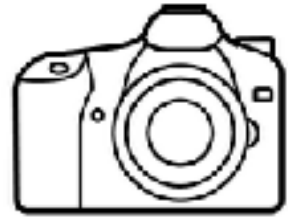


1. RETHINKING PORTRAITURE
2. RECENTERING THE SUBJECT
3. FINDING LIGHT
4. SIMPLIFY THE FRAME

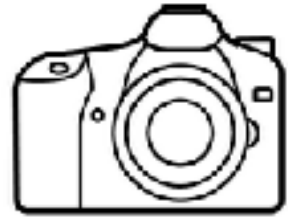


1. CROP AND COMPOSE
2. COLOR / TONE
3. RETOUCHING





FREEZE / FAKE IT



FREEZE / FAKE IT

AGGRESSIVE

INSECURE

SELF-CONSCIOUS

AUTHENTIC
SELF

STRESSED

STONED

ALOOF

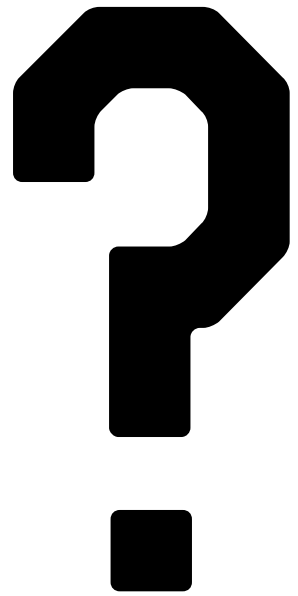
APATHETIC

ARROGANT



4 STEP GUARANTEE





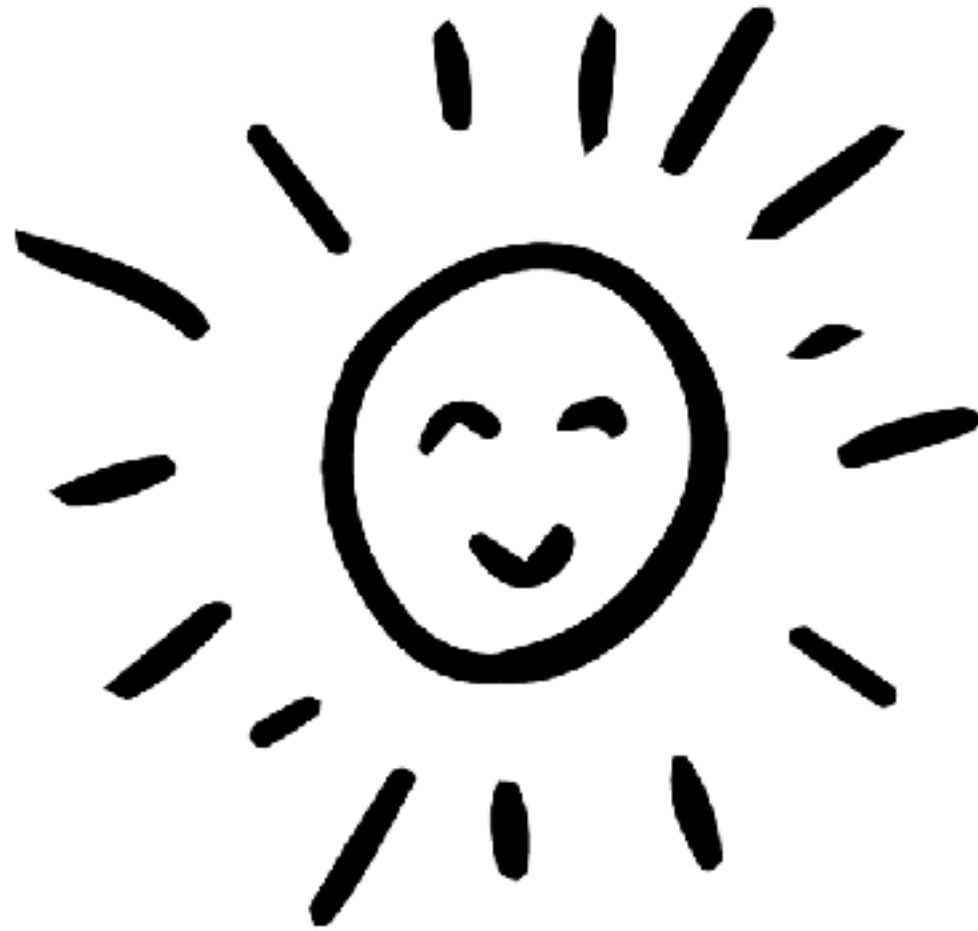
7 STRATEGIES



1. RETHINKING PORTRAITURE
2. RECENTERING THE SUBJECT
- 3. NATURAL LIGHT**
4. SIMPLIFY THE FRAME

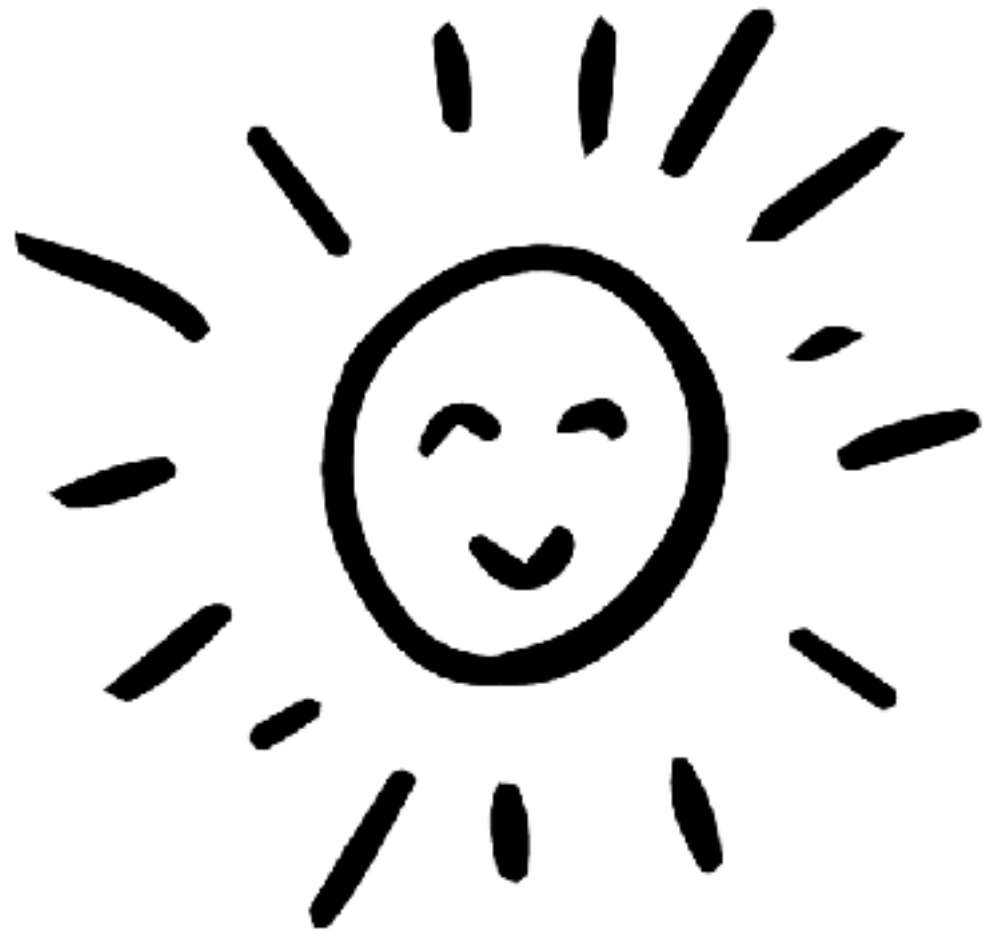


- 1. CROP AND COMPOSE**
- 2. COLOR / TONE**
- 3. RETOUCHING**



DIRECT

INDIRECT



COMPLEX

SIMPLE

HARD

SOFT

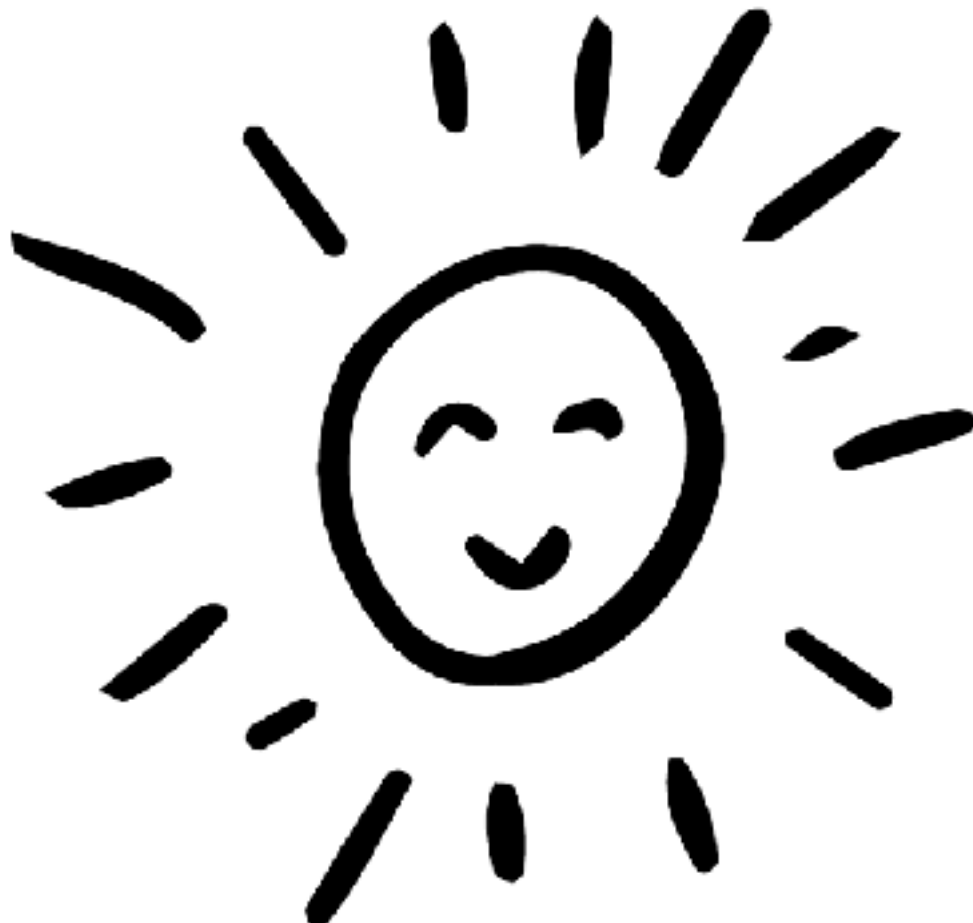
HARSH

FLATTERING



DIRECT

INDIRECT



INDIRECT



BACK LIGHT

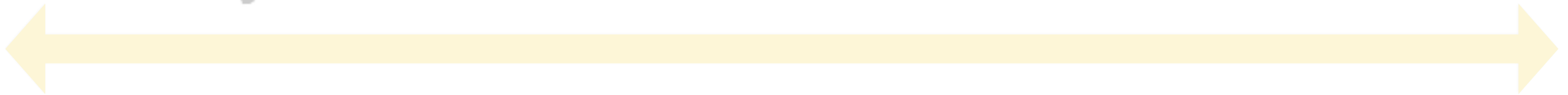
SIDE LIGHT

DAPPLED LIGHT

WINDOW LIGHT

OPEN SHADE

GARAGE LIGHT



INDIRECT

BACK LIGHT









DAPPLED LIGHT







SIDE LIGHT









OPEN SHADE











WINDOW LIGHT



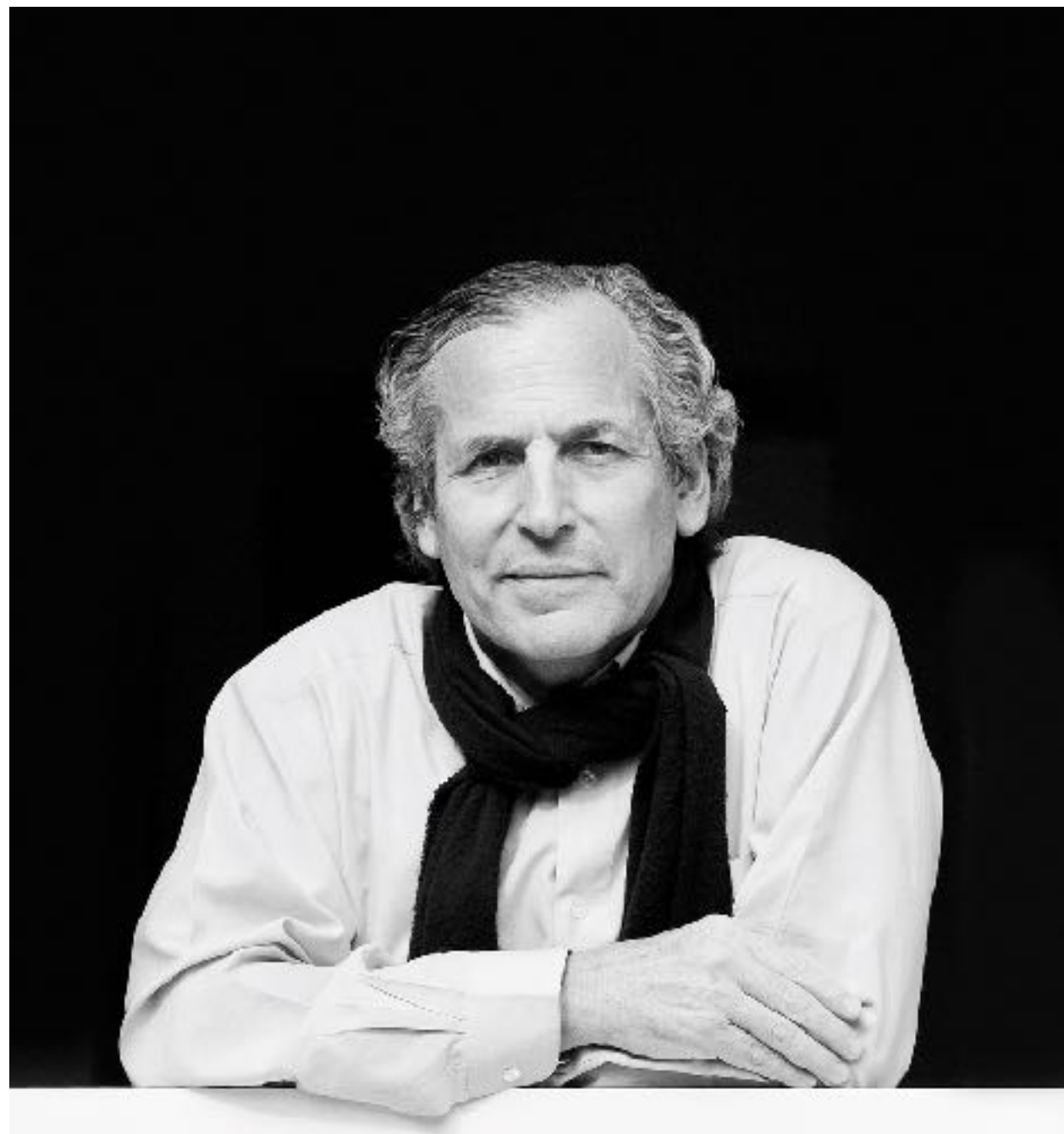


GARAGE LIGHT

DOORWAYS, WAREHOUSES AND MORE









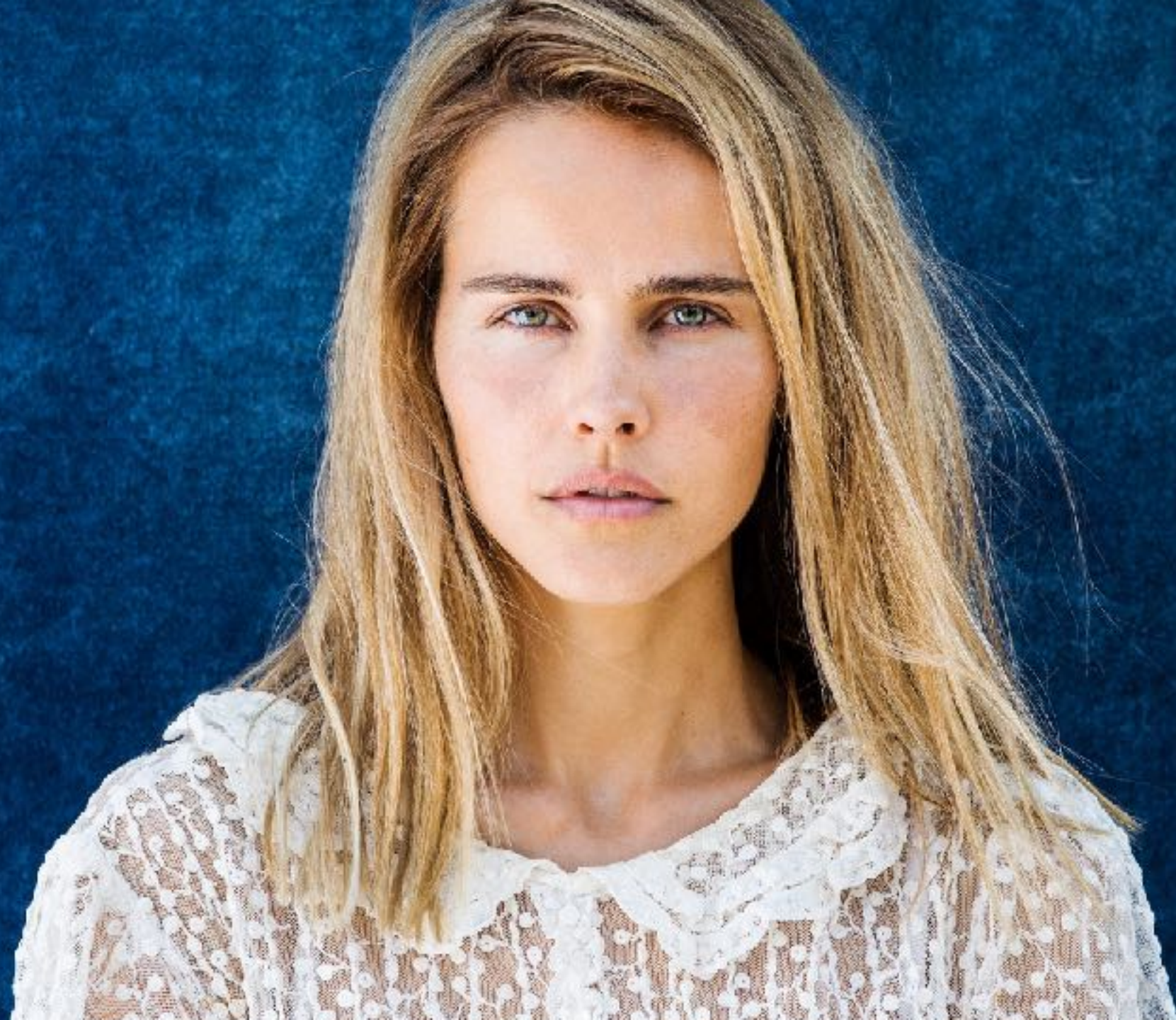


















BACK LIGHT

SIDE LIGHT

DAPPLED LIGHT

WINDOW LIGHT

OPEN SHADE

GARAGE LIGHT



BACK LIGHT
SIDE LIGHT
DAPPLED LIGHT
WINDOW LIGHT
OPEN SHADE
GARAGE LIGHT



BACK LIGHT
SIDE LIGHT
DAPPLED LIGHT
WINDOW LIGHT
OPEN SHADE
GARAGE LIGHT



BACK LIGHT
SIDE LIGHT
DAPPLED LIGHT
WINDOW LIGHT
OPEN SHADE
GARAGE LIGHT



BACK LIGHT
SIDE LIGHT
DAPPLED LIGHT
WINDOW LIGHT
OPEN SHADE
GARAGE LIGHT



BACK LIGHT
SIDE LIGHT
DAPPLED LIGHT
WINDOW LIGHT
OPEN SHADE
GARAGE LIGHT



7 STRATEGIES



1. RETHINKING PORTRAITURE
2. RECENTERING THE SUBJECT
3. NATURAL LIGHT
4. SIMPLIFY THE FRAME



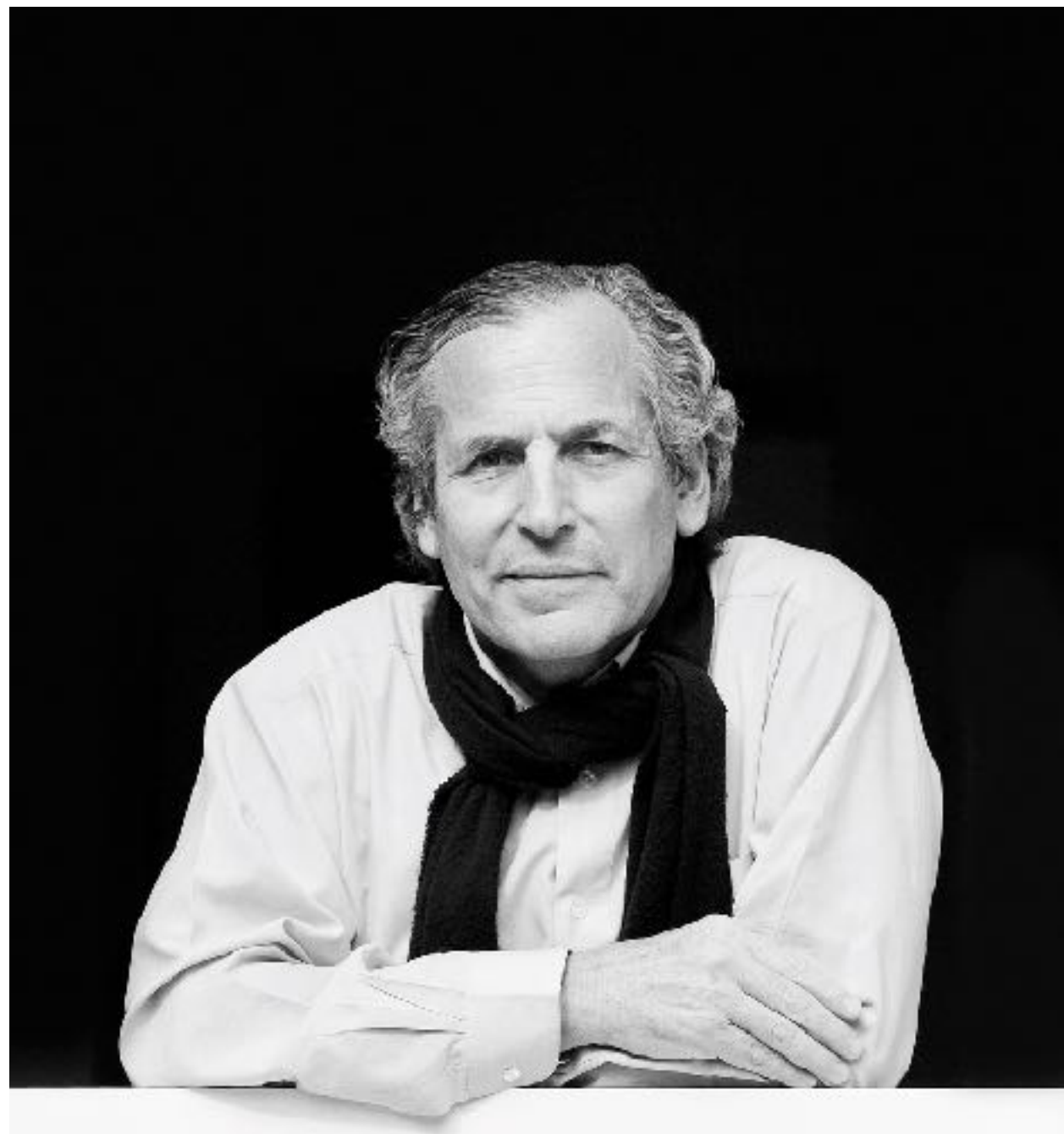
1. CROP AND COMPOSE
2. COLOR / TONE
3. RETOUCHING

REDUCE

AND SIMPLIFY













Seals
Seals are mammals that live in the water. They have flippers and can breathe air.

Do otters live in the water?
Yes, otters live in the water. They have webbed feet and a waterproof coat of fur.

Do otters sleep often?
Yes, otters sleep often. They can sleep for up to 10 hours a day.

Do otters need fresh water?
Yes, otters need fresh water. They live in rivers and streams.









CLUTTER



CLARITY

FIT THE SUBJECT

WITHIN THE FRAME

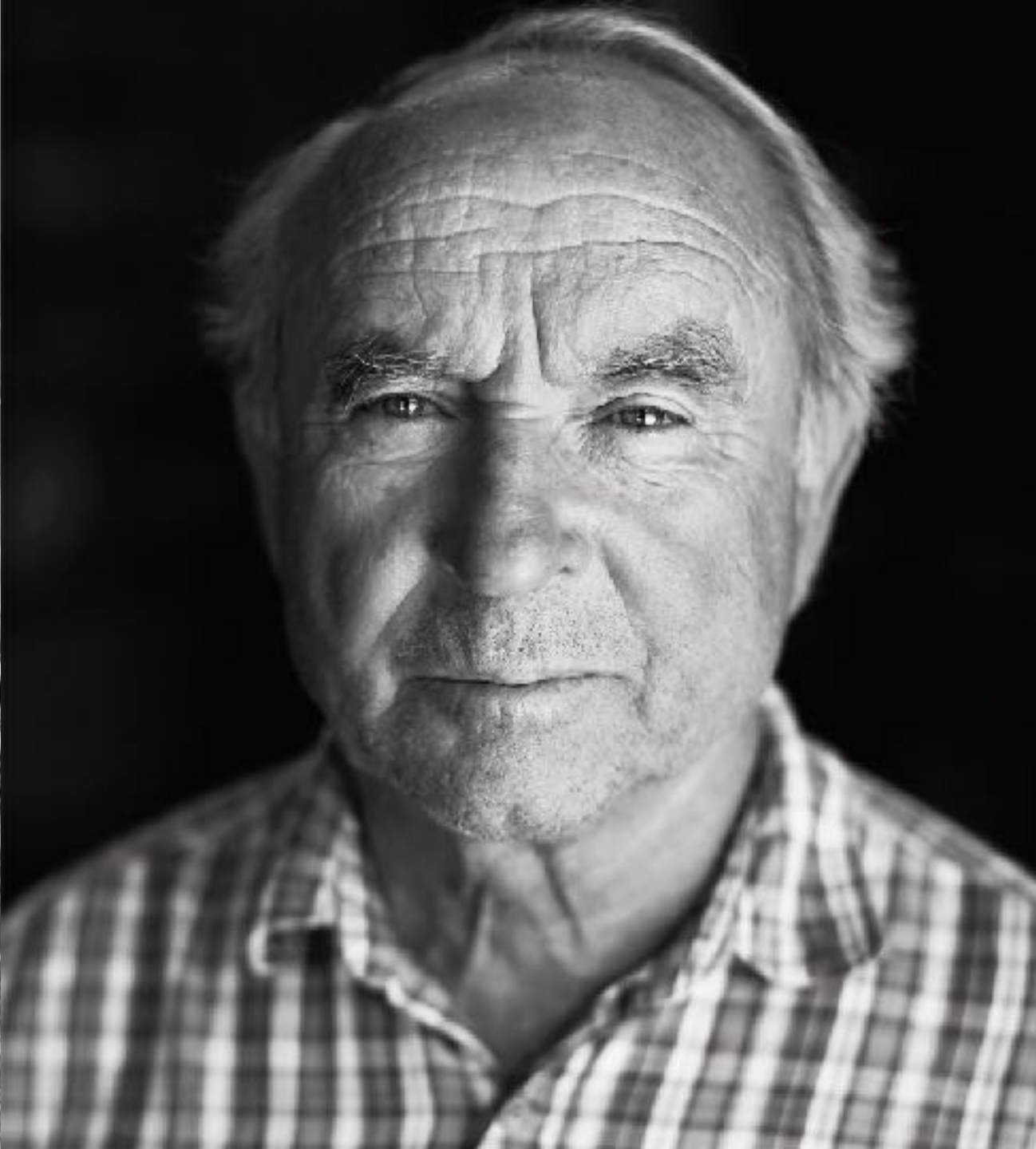




COMPOSE FOR

CONNECTION





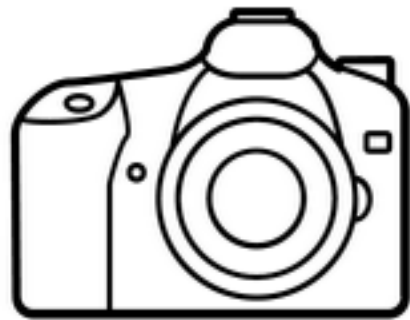


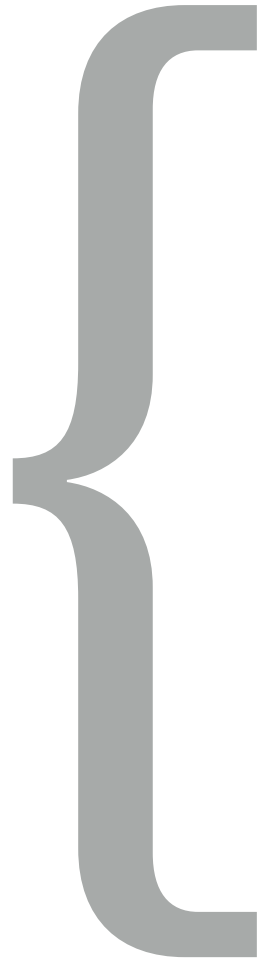
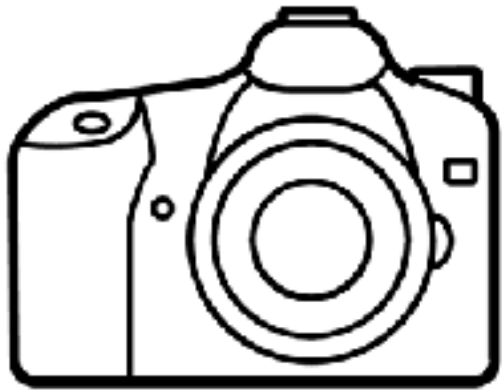




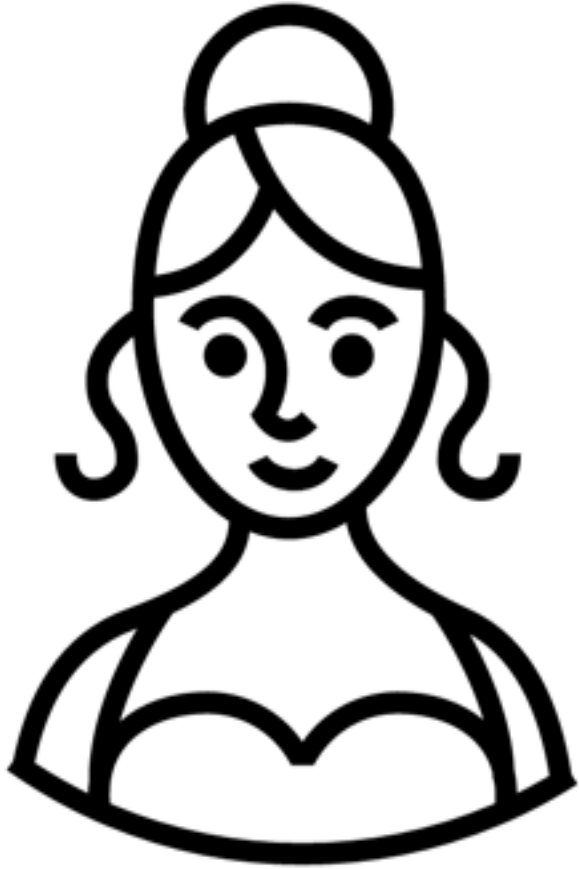
FINDING

THE PERFECT PORTRAIT LENS





APERTURE



F/1

vs



F/64



F/1.2

F/2.8





F/5.6



F/7



APERTURE

COMPARISON



F/16



F/2.8



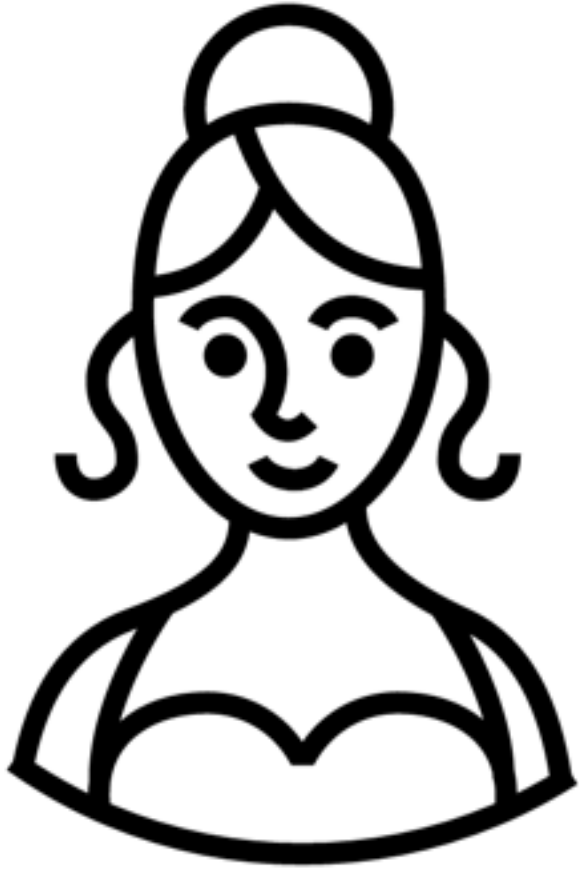
F/1.2



F/16



F/1.2



F/1

vs



F/64

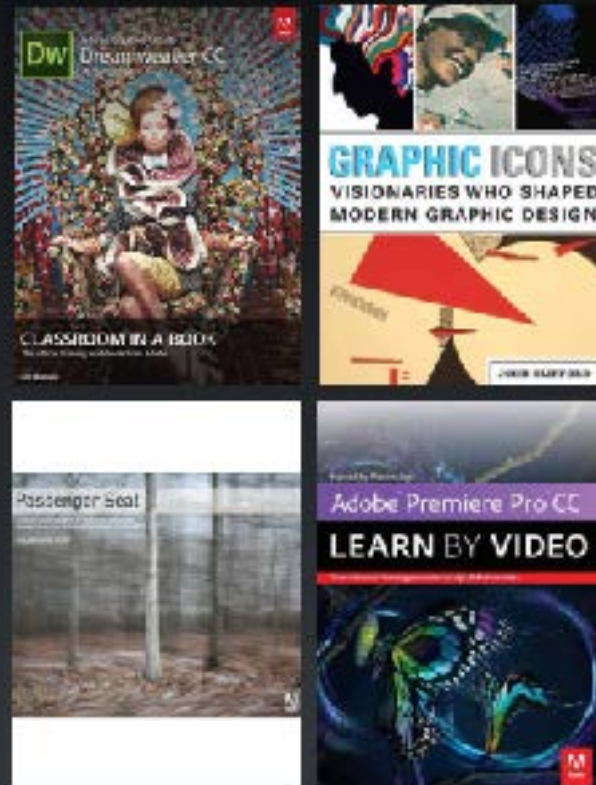
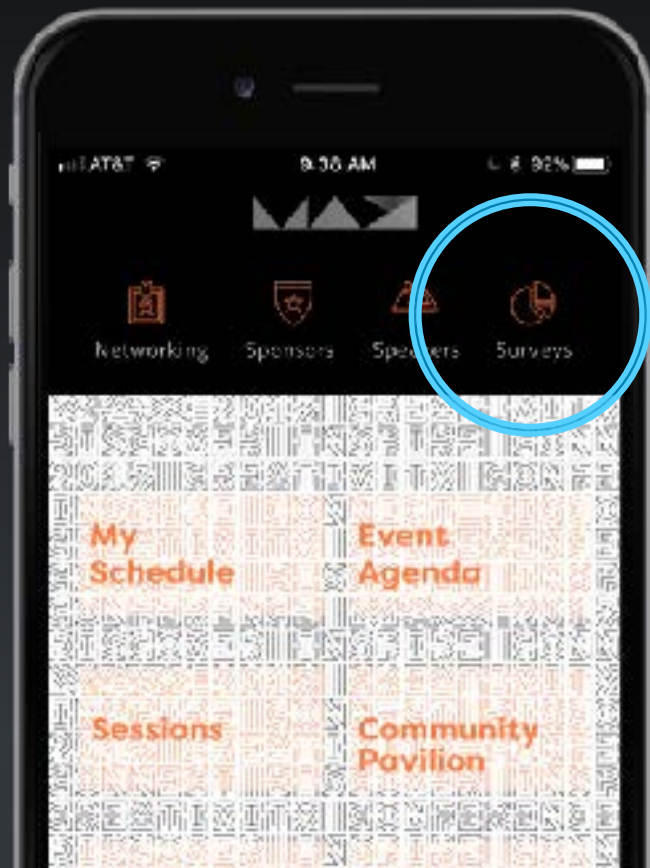
7 STRATEGIES



1. CROP AND COMPOSE
2. COLOR / TONE
3. RETOUCHING

TAKE THE **SESSION SURVEY** ON THE MAX MOBILE APP

For your chance to **WIN** an e-book or a Wacom Intuos Pro Tablet



C	R	E	A
T	I	V	E
L	I	V	E

Promo code:
ADOBEMAX17

CAPTURING AUTHENTIC PHOTOS with CHRIS ORWIG

THANKS!

CHRISORWIG.COM / LEARN

INSTAGRAM: @CHRISORWIG

